

# Dolphin Imaging

Integration Instructions for Edge

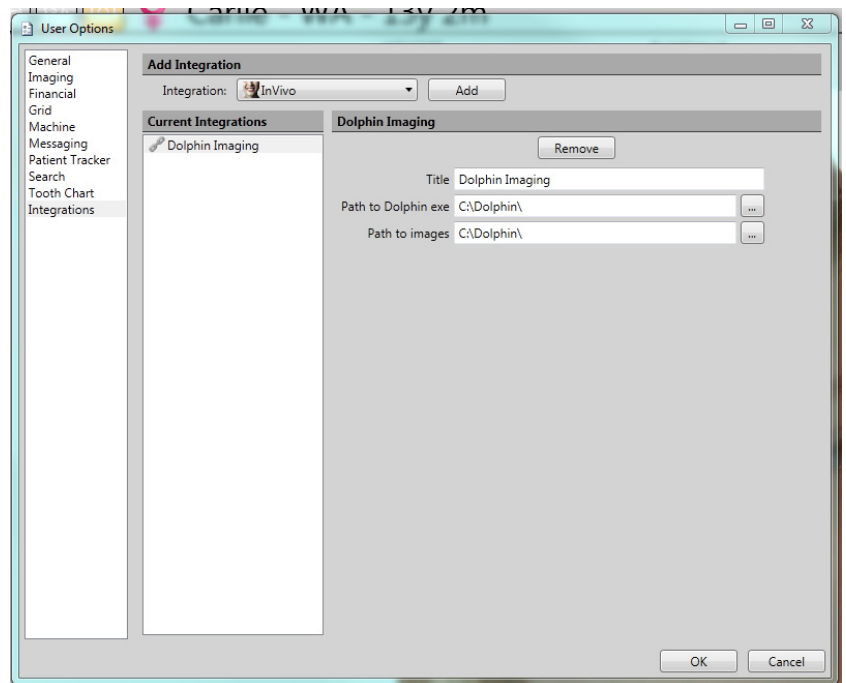


The Edge/Dolphin Imaging integration allows you to use the frontal smiling image from Dolphin Imaging in Edge and Patient Tracker, as well as all images in merge letters. You can also start Dolphin Imaging from Edge and use Edge to update and create new records in Dolphin Imaging.

## Setup

Before you begin, be sure that Dolphin Imaging version 11 or greater and Edge are installed properly. These steps must be followed on each station where you would like to use the integration.

- 1 From the Edge Home ribbon, click **User Options** in the Tools section.
- 2 Select Integrations along the left.
- 3 Under Add Integration, select Dolphin Imaging from the Integration dropdown menu.
- 4 Click **Add**.
- 5 Under Title, type a name for this integration. Dolphin Imaging is used by default.
- 6 For the Path to Dolphin exe field, use [...] to navigate to the Dolphin.exe file and select it.
- 7 For the Path to images data field, use [...] to navigate to the directory in which the Dolphin images are stored.
- 8 Click **OK**.



## Using the Integration

All Dolphin patients to be integrated must be saved with the Edge patient ID number. For example, a patient with ID "JO18" would be saved in Dolphin as "JO18".

The picture that is labeled "Facial Frontal Smiling" in Dolphin will be the image that is shown in the Patient Folder, Patient Tracker, Scheduler, Treatment Hub, and elsewhere.

To open a patient's images in the Dolphin program, click on the Imaging button within the patient record.

# Contact

## **Dolphin Imaging**

Dolphin  
9200 Eton Avenue  
Chatsworth, CA 91311-5807  
[www.dolphinimaging.com](http://www.dolphinimaging.com)  
(800) 548-7241

## **Edge**

Ortho2  
1107 Buckeye Avenue  
Ames, IA 50010  
[www.ortho2.com](http://www.ortho2.com)  
(800) 346-4504 or (515) 233-1026