

Dolphin Imaging

Integration Instructions for Edge Cloud

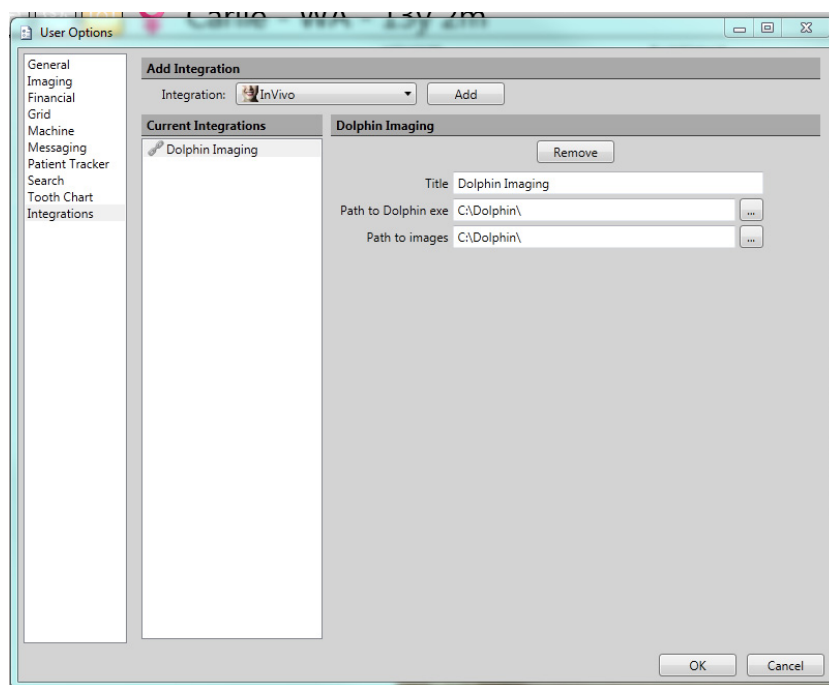


The Edge Cloud/Dolphin Imaging integration allows you to use the frontal smiling image from Dolphin Imaging in Edge Cloud and Patient Tracker, as well as all images in merge letters. You can also start Dolphin Imaging from Edge Cloud and use Edge Cloud to update and create new records in Dolphin Imaging.

Setup

Before you begin, be sure that Dolphin Imaging version 11 or greater and Edge Cloud are installed properly. These steps must be followed on each station where you would like to use the integration.

- 1 From the Edge Cloud Home ribbon, click **User Options** in the Tools section.
- 2 Select Integrations along the left.
- 3 Under Add Integration, select Dolphin Imaging from the Integration dropdown menu.
- 4 Click **Add**.
- 5 Under Title, type a name for this integration. Dolphin Imaging is used by default.
- 6 For the Path to Dolphin exe field, use [...] to navigate to the Dolphin.exe file and select it.
- 7 For the Path to images data field, use [...] to navigate to the directory in which the Dolphin images are stored.
- 8 Click **OK**.



Using the Integration

All Dolphin patients to be integrated must be saved with the Edge Cloud patient ID number. For example, a patient with ID "JO18" would be saved in Dolphin as "JO18".

The picture that is labeled "Facial Frontal Smiling" in Dolphin will be the image that is shown in the Patient Folder, Patient Tracker, Scheduler, Treatment Hub, and elsewhere.

To open a patient's images in the Dolphin program, click on the Imaging button within the patient record.

Contact

Dolphin Imaging

Dolphin
9200 Eton Avenue
Chatsworth, CA 91311-5807
www.dolphinimaging.com
(800) 548-7241

Edge Cloud

Ortho2
1107 Buckeye Avenue
Ames, IA 50010
www.ortho2.com
(800) 346-4504 or (515) 233-1026