

Orchestrate

Integration Instructions for Edge Cloud

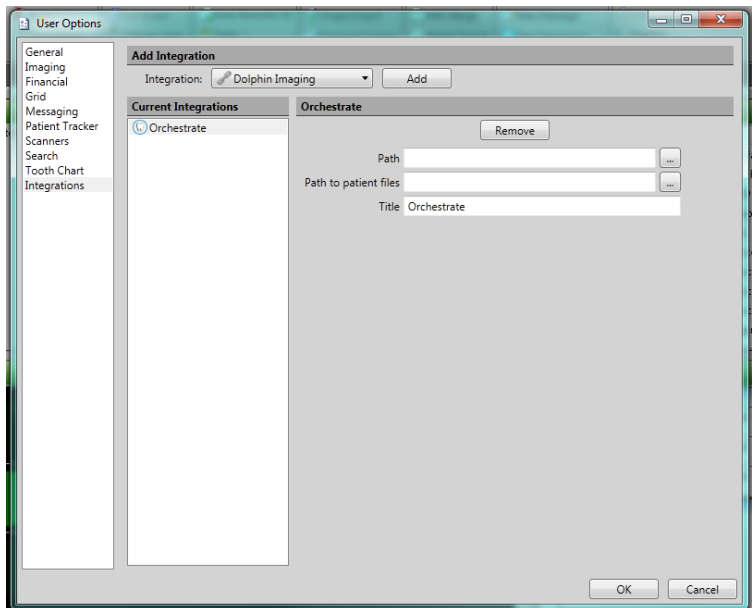


The Edge Cloud/Orchestrate integration allows the user to open a patient's record in the Orchestrate software directly from their patient record in Edge Cloud. Orchestrate and Edge Cloud would both need to be installed on the machine that you're using for the integration.

Setup

The setup for the integration takes place in the User Options:

- 1 From the Edge Cloud Home ribbon, click **User Options** in the Tools section.
- 2 Select Integrations along the left.
- 3 Under Add Integration, select Orchestrate from the Integration dropdown menu.
- 4 Click **Add**.
- 5 Under Title, type a name for this integration. Orchestrate is used by default.
- 6 For the Path field, use [...] to navigate to the Orchestrate3D.exe file and select it.
- 7 For the Path to Patient Files field, use [...] to navigate to the location of Orchestrate's .vpr files and select it.
- 8 Click **OK**.



Using the Integration

Once the integration has been set up, you can select Orchestrate from the Integrations drop down menu in the patient's imaging ribbon bar.

This will open Orchestrate outside of Edge Cloud. If a patient was active in Edge Cloud, then Orchestrate will open to that patient's record.

Contact

Orchestrate Orthodontic Technologies
Orchestrate
1747 N. Riverside Ave.
Rialto, CA 92376
www.orchestrate3d.com
(888) 755-8320

Edge Cloud
Ortho2
1107 Buckeye Avenue
Ames, IA 50010
www.ortho2.com
(800) 346-4504 or (515) 233-1026