

# OrthoCAD

Integration Instructions for Edge

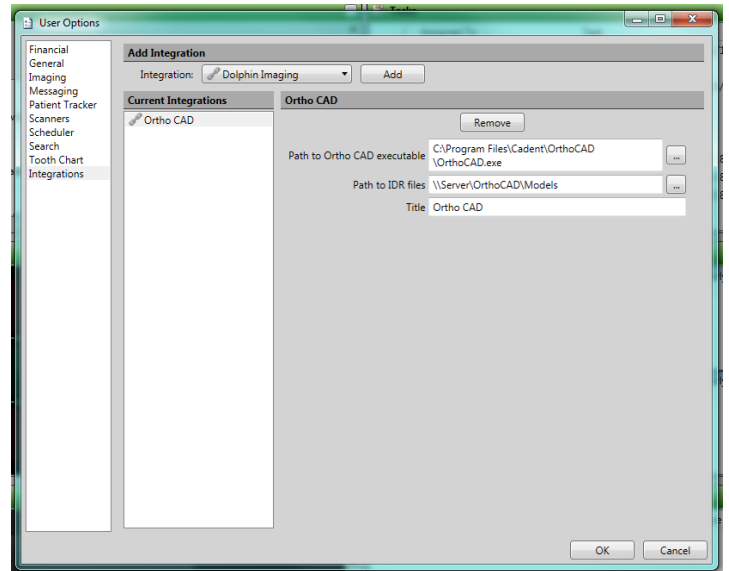


The OrthoCAD integration with Edge allows patient records in OrthoCAD to be opened from Edge.

## Setup

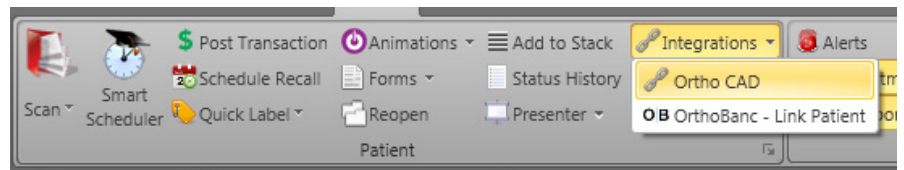
These steps must be followed on each station where you would like to use the integration.

- 1 From the Edge Home ribbon, click **User Options** in the Tools section.
- 2 Select Integrations along the left.
- 3 Under Add Integration, select OrthoCAD from the Integration dropdown menu.
- 4 Click **Add**.
- 5 For the Path to OrthoCAD exe field, use [...] to navigate to the OrthoCAD.exe file and select it.
- 6 For the Path to OrthoCAD data field, use [...] to navigate to the directory in which the digital model files are stored.
- 7 Under Title, type a name for this integration. OrthoCAD is used by default.
- 8 Click **OK**.



## Using the Integration

From an open patient's ribbon, click OrthoCAD under integrations. This will open the patient's record in OrthoCAD, and access the appropriate files on the screen.



## Contact

**OrthoCAD**  
Cadent, Inc.  
640 Gotham Parkway  
Carlstadt, NJ 07072  
www.orthocad.com  
(800) 577-8767

**ViewPoint**  
Ortho2  
1107 Buckeye Avenue  
Ames, IA 50010  
www.ortho2.com  
(800) 346-4504 or (515) 233-1026