

OrthoCAD

Integration Instructions for Edge Cloud

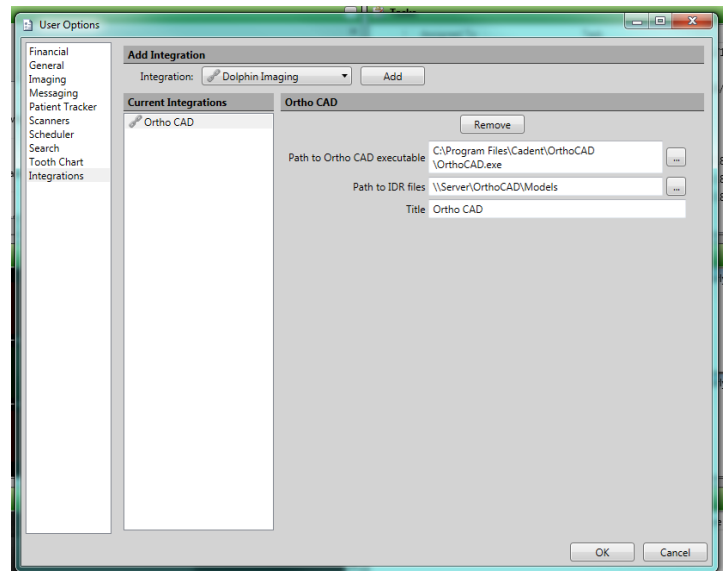


The OrthoCAD integration with Edge Cloud allows patient records in OrthoCAD to be opened from Edge Cloud.

Setup

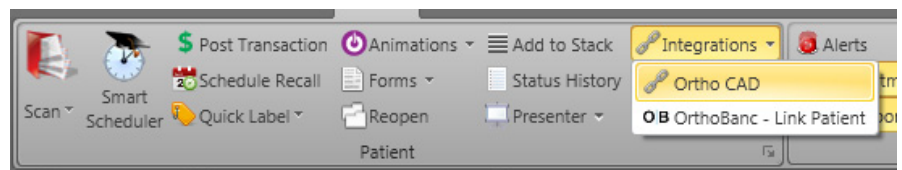
These steps must be followed on each station where you would like to use the integration.

- 1 From the Edge Cloud Home ribbon, click **User Options** in the Tools section.
- 2 Select Integrations along the left.
- 3 Under Add Integration, select OrthoCAD from the Integration dropdown menu.
- 4 Click **Add**.
- 5 For the Path to OrthoCAD exe field, use [...] to navigate to the OrthoCAD.exe file and select it.
- 6 For the Path to OrthoCAD data field, use [...] to navigate to the directory in which the digital model files are stored.
- 7 Under Title, type a name for this integration. OrthoCAD is used by default.
- 8 Click **OK**.



Using the Integration

From an open patient's ribbon, click OrthoCAD under integrations. This will open the patient's record in OrthoCAD, and access the appropriate files on the screen.



Contact

OrthoCAD
Cadent, Inc.
640 Gotham Parkway
Carlstadt, NJ 07072
www.orthocad.com
(800) 577-8767

Edge Cloud
Ortho2
1107 Buckeye Avenue
Ames, IA 50010
www.ortho2.com
(800) 346-4504 or (515) 233-1026