

# Panda Perio

Integration Instructions for Edge

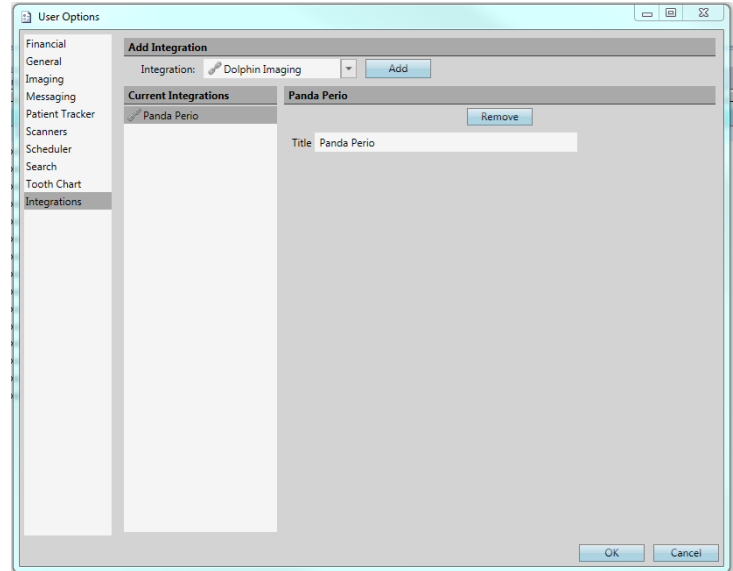


The Panda Perio integration with Edge allows patient records in Panda Perio to be opened from Edge.

## Setup

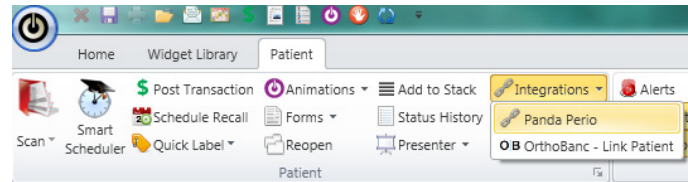
These steps must be followed on each station where you would like to use the integration.

- 1 From the Edge Home ribbon, click **User Options** in the Tools section.
- 2 Select Integrations along the left.
- 3 Under Add Integration, select Panda Perio from the Integration dropdown menu.
- 4 Click **Add**.
- 5 Click **OK**.



## Using the Integration

From an open patient's ribbon, click Panda Perio under integrations. This will open the patient's record in Panda Perio, and access the appropriate files on the screen.



## Contact

**Panda Perio**  
 Panda Perio  
 14205 SE 36<sup>th</sup> Street, Suite 100  
 Bellevue, WA 98006  
 www.pandaperio.com  
 (800) 517-7716

**ViewPoint**  
 Ortho2  
 1107 Buckeye Avenue  
 Ames, IA 50010  
 www.ortho2.com  
 (800) 346-4504 or (515) 233-1026