

ORTHO2

Panda Perio

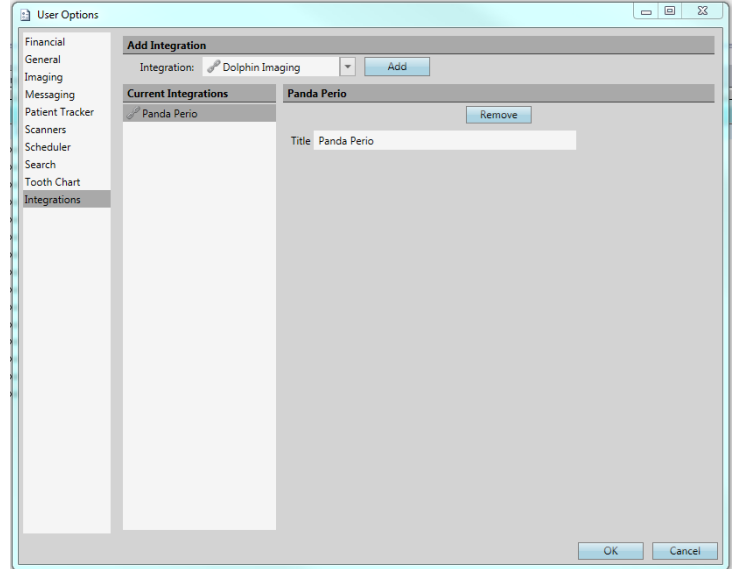
Integration Instructions for Edge Cloud

The Panda Perio integration with Edge Cloud allows patient records in Panda Perio to be opened from Edge Cloud.

Setup

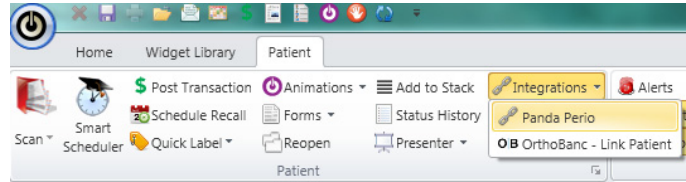
These steps must be followed on each station where you would like to use the integration.

- 1 From the Edge Cloud Home ribbon, click **User Options** in the Tools section.
- 2 Select Integrations along the left.
- 3 Under Add Integration, select Panda Perio from the Integration dropdown menu.
- 4 Click **Add**.
- 5 Click **OK**.



Using the Integration

From an open patient's ribbon, click Panda Perio under integrations. This will open the patient's record in Panda Perio, and access the appropriate files on the screen.



Contact

Panda Perio
 Panda Perio
 14205 SE 36th Street, Suite 100
 Bellevue, WA 98006
 www.pandaperio.com
 (800) 517-7716

Edge Cloud
 Ortho2
 1107 Buckeye Avenue
 Ames, IA 50010
 www.ortho2.com
 (800) 346-4504 or (515) 233-1026