

SureSmile

Integration Instructions for Edge Cloud

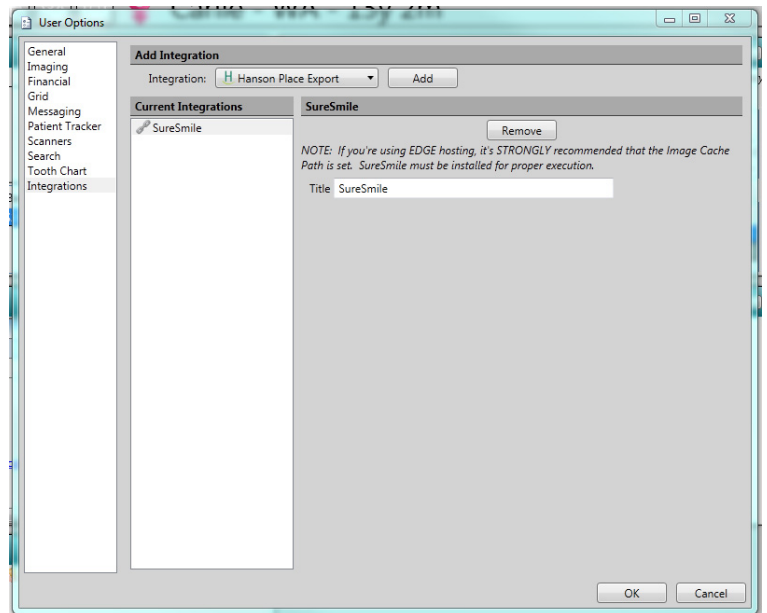


The Edge Cloud/SureSmile integration allows you to open a patient's SureSmile information from Edge Cloud.

Setup

These steps must be followed on each station where you would like to use the integration.

- 1 From the Edge Cloud Home ribbon, click **User Options** in the Tools section.
- 2 Select Integrations along the left.
- 3 Under Add Integration, select SureSmile from the Integration dropdown menu.
- 4 Click **Add**.
- 5 If you wish, you may change the title in the Title field.
- 6 Click **OK**.



Using the Integration

When a patient is opened, click the Imaging Button on the right. In the Imaging Tab, select SureSmile from the Integrations drop down menu. A SureSmile bridge application opens, where you can review the patient's images and biographical data before launching SureSmile.

Contact

SureSmile
SureSmile
2350 Campbell Creek Boulevard, Suite 400
Richardson, TX 75082
www.suresmile.com
(972) 728-5500

Edge Cloud
Ortho2
1107 Buckeye Avenue
Ames, IA 50010
www.ortho2.com
(800) 346-4504 or (515) 233-1026