

# 3M Lava Digital Models

Integration Instructions for ViewPoint



The ViewPoint integration with Lava™ Digital Models from 3M allows you to start the Lava™ Treatment Management Portal software from a ViewPoint patient record and view that patient's models. If the patient doesn't exist in Lava, the record will be created. These features require the ViewPoint Third Party Integration.

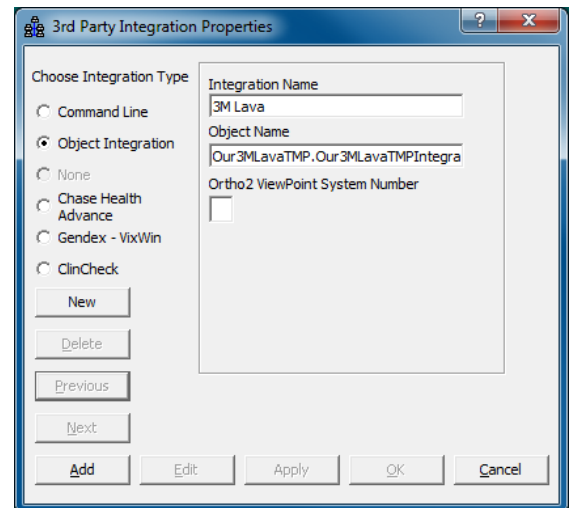
## Setup

Be sure both ViewPoint and the Lava Treatment Management Portal software are installed properly.

## ViewPoint

These steps must be followed on each station where you would like to use the integration.

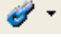

- 1 From the ViewPoint Main Menu, click **[Tools & Utilities]** and then **[Third Party Integration]**.  
Note: If you receive a CD-Key mismatch message, contact your Ortho2 Regional Manager.
- 2 Click **[New]**.
- 3 Select **Object Integration** for the integration type.
- 4 Enter "3M Lava" for the **Integration Name**.
- 5 Enter "Our3MLavaTMP.Our3MLavaTMPIntegra" for the **Object Name**.
- 6 Click **[Add]** and **[OK]**.



## Lava

Patients need to be entered in the Lava database with the same patient ID they are assigned in ViewPoint.

## Using the Integration

To start Lava from a ViewPoint patient record, click the **Third Party Integration**  button in the ViewPoint toolbar and select **3M Lava**. Lava Treatment Management Portal will open to the models of the current patient. If no record for this patient currently exists, you can select "new patient" and one will be created with the first name, last name, patient ID, and date of birth. (With this integration, the 3rd Party **Update/New** button  in the patient folder has no function.)

## Contact

**Lava Digital Models**  
3M Unitek/Orthodontic Products  
2724 South Peck Road  
Monrovia, CA 91016  
www.solutions.3m.com  
(800) 634-5300

**ViewPoint**  
Ortho2  
1107 Buckeye Avenue  
Ames, IA 50010  
www.ortho2.com  
(800) 346-4504 or (515) 233-1026

May 2, 2018