

Anatomage InVivoDental & TxSTUDIO

Integration Instructions for ViewPoint



InVivoDental™ volumetric imaging software and TxSTUDIO from Anatomage, reads DICOM data from Cone Beam CT machines. This integration allows you to start the InVivoDental or TxSTUDIO software, or the InVivo Viewer from a ViewPoint patient record and go directly to that patient's images. These features require the ViewPoint Third Party Integration.

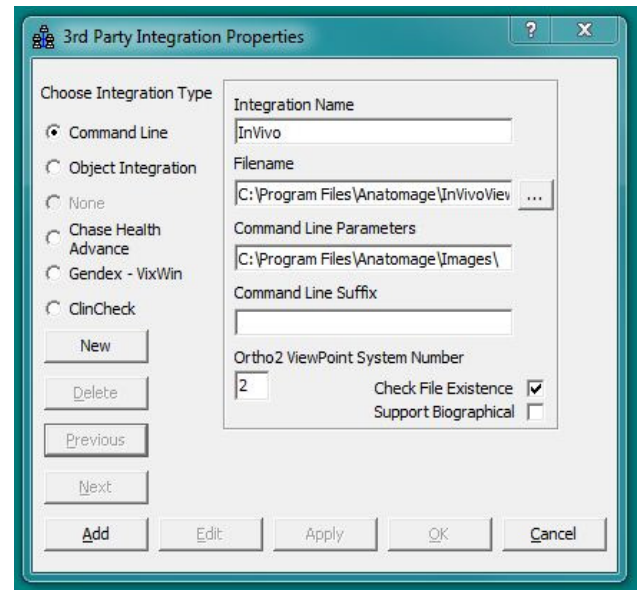
Setup

Before you begin, be sure both ViewPoint and the InVivo or TxSTUDIO software are installed properly.

ViewPoint

These steps must be followed on each station where you would like to use the integration.


- 1 From the ViewPoint Main Menu, click **[Tools & Utilities]** and then **[Third Party Integration]**.
Note: If you receive a CD-Key mismatch message, contact your Ortho2 Regional Manager.
- 2 Click **[New]**.
- 3 Select **Command Line** for the integration type.
- 4 Enter "InVivo" or "TxSTUDIO" as the **Integration Name**.
- 5 For the **Filename**, use [...] to navigate to the **InVivo.exe** and select it. If you are using TxSTUDIO, navigate to the **TxSTUDIO.exe** file and select it.
- 6 In the **Command Line Parameters** field, enter the directory in which the .amg or .inv files are stored.
- 7 Leave the **Command Line Suffix** blank.
- 8 Enter "2" for the **Ortho2 ViewPoint System Number**.
- 9 Select **Check File Existence**. (Do not select Support Biographical.)
- 10 Click **[Add]** and **[OK]**.




InVivoDental/TxSTUDIO

Patients will need to be entered in the InVivo or TxSTUDIO database with the same patient ID they are assigned in ViewPoint.

Using the Integration

With a patient loaded, click the **Third Party Integration**  button in the ViewPoint toolbar and select **InVivo** or **TxSTUDIO** to open a list of InVivo images for this patient. Select an image to open it in the InVivo or TxSTUDIO software.

With this integration, the 3rd Party **Update/New** button  in the upper right hand corner of the patient folder has no function.

Contact

InVivoDental (Invivo5)

Anatomage, Inc.
111 N. Market St. #899
San Jose, CA 95113
www.anatomage.com
(408) 885-1474

ViewPoint

Ortho2
1107 Buckeye Avenue
Ames, IA 50010
www.ortho2.com
(800) 346-4504 or (515) 233-1026