

FYI Technologies Dr. Ceph

Integration Instructions for ViewPoint



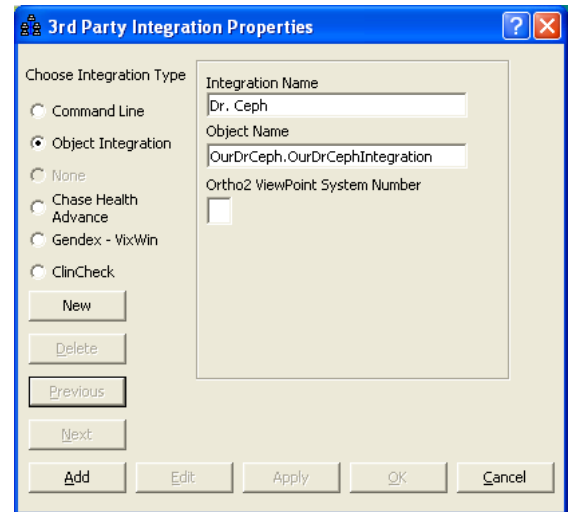
The ViewPoint integration with Dr. Ceph, FYI Technologies's ceph analysis program, allows you to start the Dr. Ceph software from a ViewPoint patient record. It will also add new patients to Dr. Ceph if they do not already exist. These features require the ViewPoint Third Party Integration.

Setup

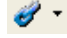
Before you begin, be sure both ViewPoint and the Dr. Ceph software are installed properly.

These steps must be followed on each station where you would like to use the integration.

- 1 From the ViewPoint Main Menu, click **Tools & Utilities** and then **Third Party Integration**.
Note: If you receive a CD-Key mismatch message, contact your Ortho2 Regional Manager.
- 2 Click **New**.
- 3 Select **Object Integration** for the integration type.
- 4 Enter "Dr. Ceph" for the **Integration Name**.
- 5 Enter "OurDrCeph.OurDrCephIntegration" for the **Object Name**.
- 6 Click **Add** and **OK**.



Using the Integration

To start Dr. Ceph from a ViewPoint patient record, click the **Third Party Integration**  button in the ViewPoint toolbar and select **Dr. Ceph**. Dr. Ceph will open that patient's record. If that patient does not exist in Dr. Ceph, it will be added.

With this integration, the 3rd Party **Update/New** button  has no function.

Contact

Dr. Ceph
FYI Technologies
HC 62, Box 288
Ozone, AR 72854
www.fyitek.com
(870) 428-5920

ViewPoint
Ortho2
1107 Buckeye Avenue
Ames, IA 50010
www.ortho2.com
(800) 346-4504 or (515) 233-1026