

# Gaidge

Integration Instructions for ViewPoint

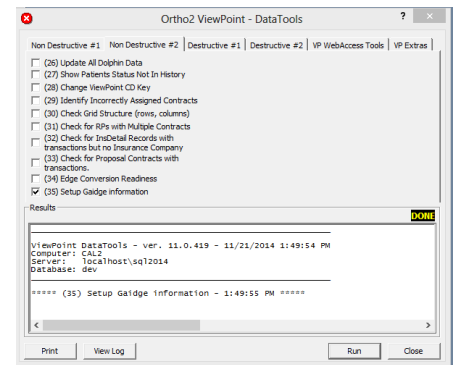
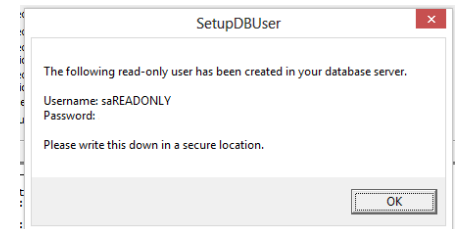
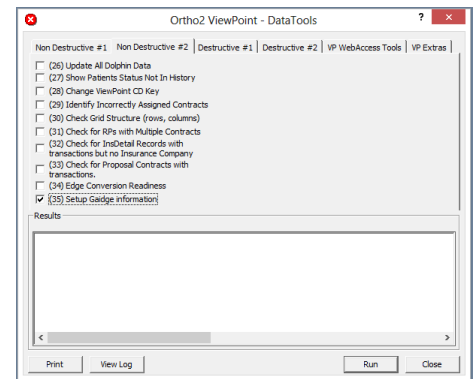


The ViewPoint integration with Gaidge provides an automated way for Gaidge to access vital information about your practice, which is used by Gaidge's performance analysis services. Gaidge will automatically gather data for processing, providing you and your consultants with an up-to-date assessment of your practice's well-being.

## Setup

Run DataTools #35 from the server machine.

- 1 Click DataTools from the Tools & Utilities portion of the Main Menu.
- 2 You will be prompted with a warning to call the Software Support Team for help. For this purpose only, click OK, without calling support.
- 3 Click the Non Destructive #2 tab. Select (35) Setup Gaidge information and click Run.
- 4 While the DataTool runs in the background, several prompts will appear. Click OK on all of them. *Note: The second prompt will include a username and password. Write down both pieces of information and store it in a secure location.*
- 5 The DataTools window will display DONE in the results portion of the window when the setup is complete.



## Contact

### Gaidge

2835 Northpoint Boulevard  
Hixson, TN 37343  
www.gaidge.com  
(800) 287-3396

### ViewPoint

Ortho2  
1107 Buckeye Avenue  
Ames, IA 50010  
www.ortho2.com  
(800) 346-4504 or (515) 233-1026