

# Gendex DenOptix

Integration Instructions for ViewPoint



The Gendex DenOptix phosphor imaging plate processor, when set up correctly, will function the same as a regular scanner within VP Imaging. No additional hardware or software is needed.

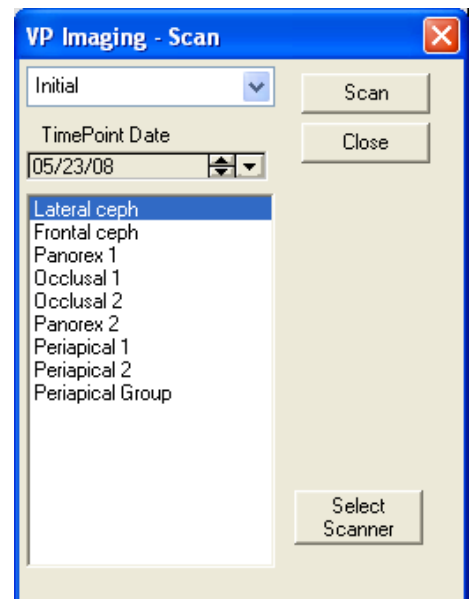
## Setup

Install the Gendex DenOptix, appropriate software, and corresponding TWAIN driver. This should be accomplished by someone from Gendex.

For information on setting up VP Imaging, consult the VP Imaging documentation and contact Ortho2 Software Support with any questions.

## Using the Integration

- 1 Open a patient record in ViewPoint and click the **VP Imaging** tab.
- 2 Select the appropriate layout.
- 3 Click **[Scan]** to open the *VP Imaging - Scan* window.
- 4 Select the appropriate timepoint.
- 5 Select the appropriate image type.
- 6 Click **[Select Scanner]** to open the *Select Scanner* window.
- 7 On the **Twain** tab, select the Gendex device. Click **[OK]**.
- 8 Click **[Scan]** on the *VP Imaging - Scan* window. This will start your scanning software. For more information on proceeding, refer to the Gendex documentation.
- 9 A **Count=1** notation will appear beneath the **[Close]** button. Scan additional images or click **[Close]**.



Refer to the VP Imaging documentation for instructions on how to use the Image Editor.

## Contact

**DenOptix**  
Gendex Dental Systems  
340 East Route 22  
Lake Zurich, IL 60047  
www.gendex.com  
(888) 275-5286

**ViewPoint**  
Ortho2  
1107 Buckeye Avenue  
Ames, IA 50010  
www.ortho2.com  
(800) 346-4504 or (515) 233-1026