

Gendex VixWin

Integration Instructions for ViewPoint



The ViewPoint integration with VixWin software from Gendex allows you to start the VixWin software from a ViewPoint patient record and go directly to that patient's images. These features require the ViewPoint Third Party Integration.

Setup

Before you begin, be sure both ViewPoint and the VixWin software are installed properly.

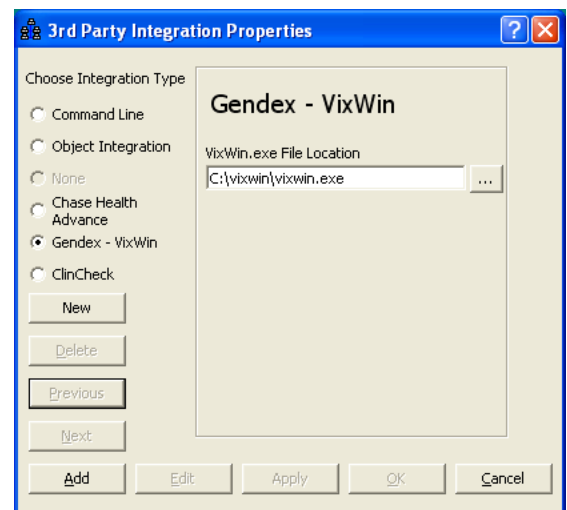
Important: If you have existing patient images in VixWin, do not complete step 6 until after you read the Note below.

- 1 From the ViewPoint Main Menu, click [Tools & Utilities] and then [Third Party Integration].

Note: If you receive a CD-Key mismatch message, contact your Ortho2 II Systems Consultant.


- 2 Click [New].
- 3 Select **Gendex - VixWin** for the integration type.
- 4 Use [...] to navigate to the **VixWin.exe File Location**.
- 5 Click [Add] and [OK].

- 6 Locate the VIXWIN.INI and open it with Windows® Notepad or similar program. Change the line which reads "database=1" to "database=0".



Note: Changing the database number in the VIXWIN.INI is necessary for the ViewPoint/VixWin integration to function. However, once it is changed **none of the existing patient images will be accessible from either ViewPoint or VixWin** until they are re-imported in VixWin. The process involves opening the VixWin patient data with Microsoft Excel® and printing certain columns. Then the .JIF files that match each patient's hexadecimal ID need to be imported into the VixWin database. Additionally, for these existing patient images to be accessible from ViewPoint, they will need to be assigned a VixWin ID which matches the ViewPoint Primary ID. We recommend you call Gendex technical support for assistance with this process.

Using the Integration

To open VixWin from a ViewPoint patient record, simply click the **Third Party Integration**  button in the ViewPoint toolbar and select **VixWin**. VixWin will start and automatically load the current patient.

With this integration, the 3rd Party **Update/New** button  in the patient folder has no function.

Contact

VixWin

Gendex Dental Systems
340 East Route 22
Lake Zurich, IL 60047
www.gendex.com
(888) 275-5286

ViewPoint

Ortho2
1107 Buckeye Avenue
Ames, IA 50010
www.ortho2.com
(800) 346-4504 or (515) 233-1026