

GeoDigm emodel

Integration Instructions for ViewPoint



The ViewPoint integration with emodel® software from GeoDigm allows you to start the emodel software from a ViewPoint patient record and view that patient's models. These features require the ViewPoint Third Party Integration.

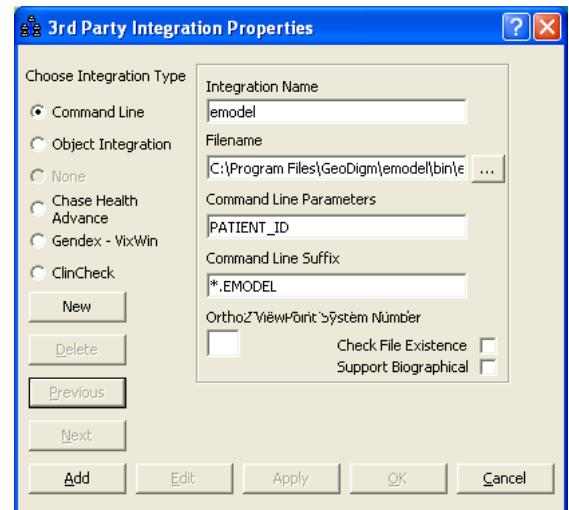
Setup

Before you begin, be sure both ViewPoint and the emodel software are installed properly.

ViewPoint

These steps must be followed on each station where you would like to use the integration.


- 1 From the ViewPoint Main Menu, click **Tools & Utilities** and then **Third Party Integration**.
Note: If you receive a CD-Key mismatch message, contact your Ortho2 Regional Manager.
- 2 Click **New**.
- 3 Select **Command Line** for the integration type.
- 4 Enter "emodel" for the **Integration Name**.
- 5 For the **Filename**, use ... to navigate to the **emodel.exe** and select it.
- 6 Enter "PATIENT_ID" (all caps) for the **Command Line Parameters**.
- 7 Enter "*.EMODEL" for the **Command Line Suffix**.
- 8 Click **Add** and **OK**.



emodel

Patients will need to be entered in the emodel database with the same patient ID they are assigned in ViewPoint.

Using the Integration

To start emodel from a ViewPoint patient record, click the **Third Party Integration**  button in the ViewPoint toolbar and select **emodel**. Emodel will open to a list from which you select to view that patient. If the patient doesn't exist, emodel will still open, but will not display a list of patients. You may then add this patient as a new patient within emodel.

With this integration, the 3rd Party **Update/New** button  in the patient folder has no function.

Contact

emodel

GeoDigm Corporation
1630 Lake Drive West
Chanassen, MN 55317
www.dentalemodels.com
(866) 436-6335

ViewPoint

Ortho2
1107 Buckeye Avenue
Ames, IA 50010
www.ortho2.com
(800) 346-4504 or (515) 233-1026