

Instrumentarium CliniView

Integration Instructions for ViewPoint



CliniView™ software is used to capture panoramic, cephalometric, and intraoral images from a variety of Instrumentarium devices. When the TWAIN driver included with CliniView is set up correctly, this will function the same as a scanner from within VP imaging. No additional hardware or software is needed.

Setup

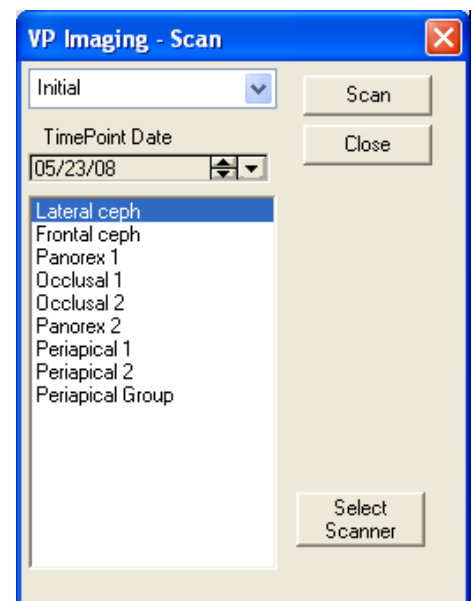
- 1 Install the TWAIN driver from the Cliniview Software CD.
- 2 Change bit depth from 16 to 8 bits. (This step may not always be necessary.)
- 3 Install the gain calibration files, if necessary.

These setup steps are best accomplished by someone from Instrumentarium.

For information on setting up VP Imaging, consult the VP Imaging documentation and contact Ortho2 Software Support with any questions.

Using the Integration

- 1 Open a patient record in ViewPoint and click the **VP Imaging** tab.
- 2 Select the appropriate layout.
- 3 Click **[Scan]** to open the *VP Imaging - Scan* window.
- 4 Select the appropriate timepoint.
- 5 Select the appropriate image type.
- 6 Click **[Select Scanner]** to open the *Select Scanner* window.
- 7 On the **Twain** tab, select the Instrumentarium device. Click **[OK]**.
- 8 Click **[Scan]** on the *VP Imaging - Scan* window. This will start your scanning software. For more information on proceeding, refer to the Instrumentarium documentation.
- 9 A **Count=1** notation will appear beneath the **[Close]** button. Scan additional images or click **[Close]**.



Refer to the VP Imaging documentation for instructions on how to use the Image Editor.

Contact

CliniView

Instrumentarium Dental, Inc.
300 West Edgerton Avenue
Milwaukee, WI 53207
www.instrumentariumdental.com
(800) 558-6120

ViewPoint

Ortho2
1107 Buckeye Avenue
Ames, IA 50010
www.ortho2.com
(800) 346-4504 or (515) 233-1026