

# Kodak Software

Integration Instructions for ViewPoint



Ortho2 provides an integration to the Kodak bridge (pwimage) to access Orthoimaging/DR Imaging/OMS Imaging and use that software to view and optionally export images. If the patient record does not exist in the Kodak software, one will be created. These features require the ViewPoint Third Party Integration.

## Setup

Before you begin, be sure both ViewPoint and the Kodak software are installed properly. Pwimage.exe must be located in the C:\OMS directory.

## ViewPoint

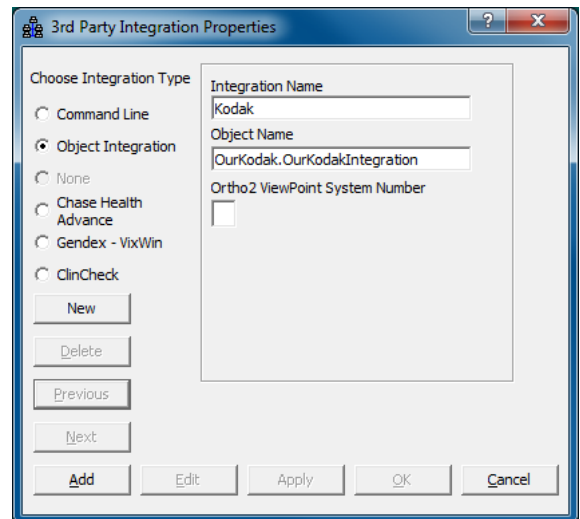
These steps must be followed on each station where you would like to use the integration.

### Third Party Integration Properties

- 1 From the ViewPoint Main Menu, click **[Tools & Utilities]** and then **[Third Party Integration]**.

Note: If you receive a CD-Key mismatch message, contact your Ortho2 Systems Consultant.

- 2 Click **[New]**.
- 3 Select **Object Integration** for the integration type.
- 4 Enter "Kodak" for the **Integration Name**.
- 5 Enter "OurKodak.OurKodakIntegration" for the **Object Name**.
- 6 Click **[Add]** and **[OK]**.

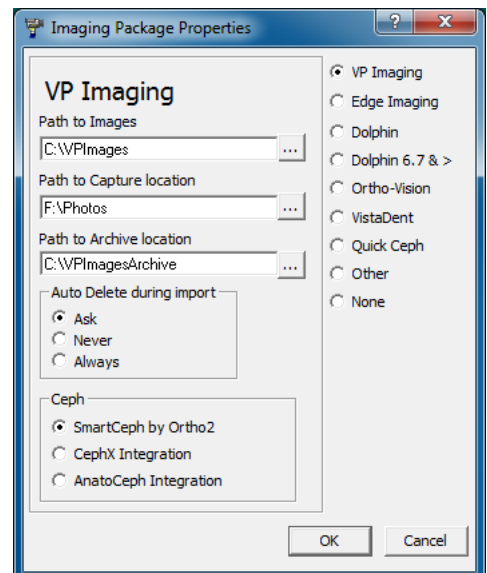


### Imaging Package Properties

If you do not use VP Imaging, images exported from the Kodak software will be saved to C:\OMS. For more information, see "Using the Integration," on the second page of this document.

If you do use VP Imaging, images exported from the Kodak software will be saved in your capture location:

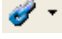
- 1 From the ViewPoint Main Menu, click **[Tools & Utilities]** and then **[Image Integration]**.
- 2 Verify the **Path to Capture Location** is correct.
- 3 Click **[OK]**.



# Orthoimaging/DR Imaging/OMS Imaging


Patients will need to be entered in the Kodak software with the same patient ID they are assigned in ViewPoint.

## Using the Integration

With a patient loaded, click the **Third Party Integration**  button in the ViewPoint toolbar and select **Kodak**. The Kodak software will start and automatically load the current patient using the primary ID. If no record for this patient currently exists, one will be created with first name, middle initial, last name, nickname, birth date, gender, and primary ID. If a patient record exists, this same biographical information will be updated in the Kodak software using information from ViewPoint.

Images can be exported from the Kodak software.

- If the Imaging Package Properties are set to VP Imaging and a capture location has been entered, the exported images will be saved to that location. They can then be easily imported into VP Imaging. For import instructions, please refer to the VP Imaging documentation.
- Otherwise, the exported images will be saved to C:\OMS.

With this integration, the 3rd Party **Update/New** button  in the upper right hand corner of the patient folder has no function.

## Contact

**Orthoimaging/DR Imaging/OMS Imaging**  
Carestream, Inc.

[www.kodakdental.com](http://www.kodakdental.com)  
(877) 624-6243

**ViewPoint**  
Ortho2  
1107 Buckeye Avenue  
Ames, IA 50010  
[www.ortho2.com](http://www.ortho2.com)  
(800) 346-4504 or (515) 233-1026