

# MediaDent

Integration Instructions for ViewPoint



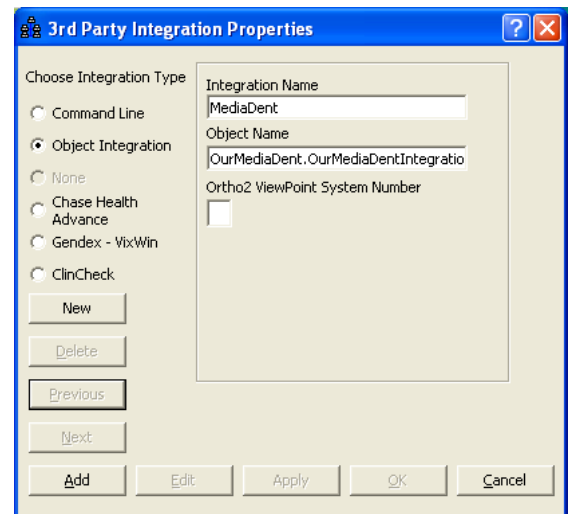
The ViewPoint integration with MediaDent® Digital Imaging from MultiMedia Dental Systems, Inc. allows you to start the MediaDent software from a ViewPoint patient record and go directly to that patient's image. These features require the ViewPoint Third Party Integration.

## Setup

Before you begin, be sure both ViewPoint and the MediaDent software are installed properly. ViewPoint should be updated to the most current version.

These steps must be followed on each station where you would like to use the integration.

- 1 From the ViewPoint Main Menu, click **Tools & Utilities** and then **Third Party Integration**.  
*Note: If you receive a CD-Key mismatch message, contact your Ortho2 Regional Manager.*
- 2 Click **New**.
- 3 Select **Object Integration** for the integration type.
- 4 Enter "MediaDent" for the **Integration Name**.
- 5 Enter "OurMediaDent.OurMediaDentIntegratio" for the **Object Name**.
- 6 Click **Add** and **OK**.



## Using the Integration

With a patient loaded, click the **Third Party Integration**  button in the ViewPoint toolbar and select **MediaDent** to open MediaDent to the patient. If the patient does not exist in MediaDent, it will be added.

With this integration, the 3rd Party **Update/New** button  in the upper right hand corner of the patient folder has no function.

## Contact

**MediaDent**  
MultiMedia Dental Systems, Inc.  
935 Hwy 124, Suite 215  
Braselton, GA 30517  
www.mediadentusa.com  
(877) 770-8514

**ViewPoint**  
Ortho2  
1107 Buckeye Avenue  
Ames, IA 50010  
www.ortho2.com  
(800) 346-4504 or (515) 233-1026