

Motion View

Integration Instructions for ViewPoint



The ViewPoint integration with Motion View allows you to start the Motion View software from a ViewPoint patient record and go directly to that patient's record. These features require the ViewPoint Third Party Integration.

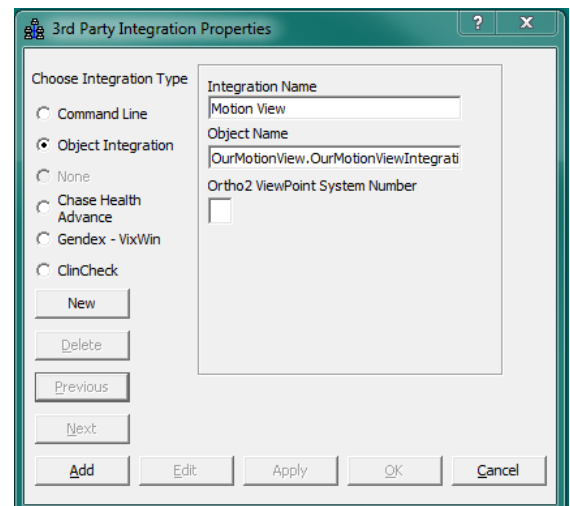
Setup

Before you begin, be sure both ViewPoint and the Motion View software are installed properly.

ViewPoint

These steps must be followed on each station where you would like to use the integration. ViewPoint should be updated to the most recent version.



- 1 From the ViewPoint Main Menu, click **Tools & Utilities** and then **Third Party Integration**.
Note: If you receive a CD-Key mismatch message, contact your Ortho2 Regional Manager.
- 2 Click **New**.
- 3 Select **Object Integration** for the integration type.
- 4 Enter "Motion View" for the **Integration Name**.
- 5 Enter "OurMotionView.OurMotionViewIntegrati" for the **Object Name**.
- 6 Click **Add** and **OK**.



Motion View

Patients need to have the same patient ID in the Motion View database that they have in ViewPoint.

Using the Integration

With a patient loaded, click the **Third Party Integration**  button in the ViewPoint toolbar and select **Motion View** to open Motion View to the patient. If the patient does not exist in Motion View, it will be added. (With this integration, the 3rd Party **Update/New** button  in the patient folder has no function.)

Contact

Motion View
Motion View Software, LLC.

www.motionview3d.com
(423) 451-7205

ViewPoint
Ortho2
1107 Buckeye Avenue
Ames, IA 50010
www.ortho2.com
(800) 346-4504 or (515) 233-1026