

Orchestrate

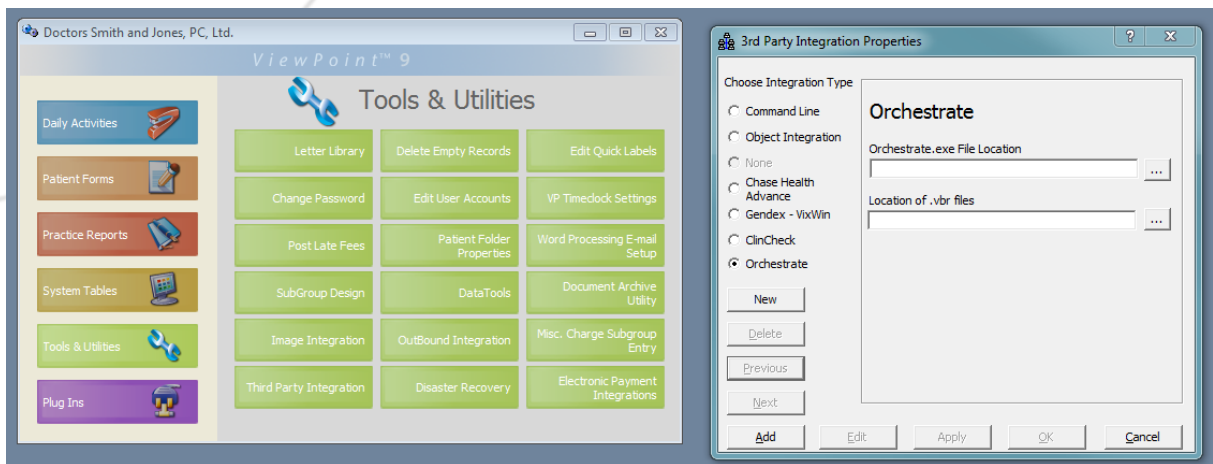
Integration Instructions for ViewPoint



This integration allows the user to open a patient's record in the Orchestrate software directly from their patient record in ViewPoint. Orchestrate and ViewPoint would both need to be installed on the machine that we're using for the integration.

Setup

- 1 From the ViewPoint Main Menu, click **Tools & Utilities** along the left.

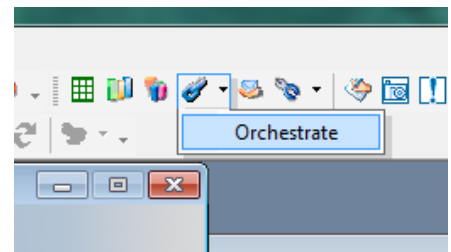


- 2 Select **Third Party Integration** at the lower left
- 3 Click **New** to add a new Third Party Integration
- 4 Under Choose Integration Type, select Orchestrate
- 5 For the Path field, type or use [...] to navigate to the Orchestrate.exe file and select it
- 6 For the Path to Patient Files field, type or use [...] to navigate to the location of Orchestrate's.vbr files and select it
- 7 Click **Add**

Using the Integration

Once the integration is in place, the Orchestrate integration will be available from the Third Party Integration dropdown list.

Selecting Orchestrate will open the Orchestrate software outside of ViewPoint. If a patient was active in ViewPoint when the integration was selected, then Orchestrate will open to that patient's Orchestrate record.



Contact

Orchestrate Orthodontic Technologies

Orchestrate
1747 N. Riverside Ave.
Rialto, CA 92376
www.orchestrate3d.com
(888) 755-8320

ViewPoint

Ortho2
1107 Buckeye Avenue
Ames, IA 50010
www.ortho2.com
(800) 346-4504 or (515) 233-1026