

OrthoCAD

Integration Instructions for ViewPoint



The ViewPoint integration with Cadent's OrthoCAD™ 3-D digital models will allow you to start the OrthoCAD program from a ViewPoint patient record and view that patient's OrthoCAD record. These features require the ViewPoint Third Party Integration.

Setup

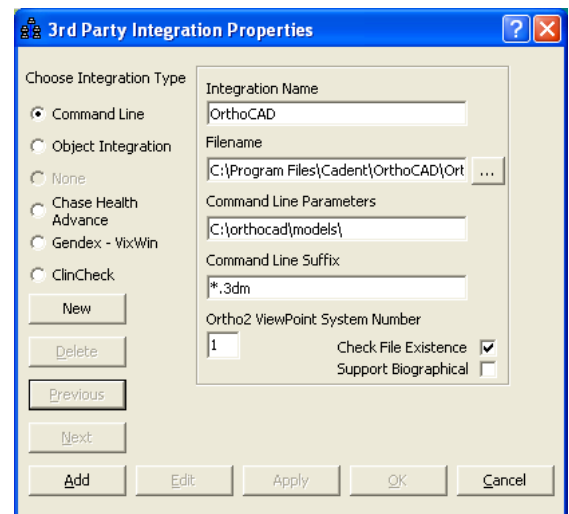
Before you begin, be sure both ViewPoint and the OrthoCAD software are installed properly.

ViewPoint

These steps must be followed on each station where you would like to use the integration.

- 1 From the ViewPoint Main Menu, click **[Tools & Utilities]** and then **[Third Party Integration]**.
Note: If you receive a CD-Key mismatch message, contact your Ortho2 Systems Consultant.


- 2 Click **[New]**.
- 3 Select **Command Line** for the integration type.
- 4 Enter "OrthoCAD" as the **Integration Name**.
- 5 For the **Filename**, use [...] to navigate to the **OrthoCAD.exe** and select it.
- 6 In the **Command Line Parameters** field, enter the directory in which the models are stored: C:\orthocad\models\ or substitute the appropriate network drive.
- 7 Enter "*.3dm" as the **Command Line Suffix**.
- 8 Enter "1" for the Ortho2 ViewPoint System Number.
- 9 Select **Check File Existence**. (Do not select Support Biographical.)
- 10 Click **[Add]** and **[OK]**.



OrthoCAD

Patients will need to be entered in the OrthoCAD database with the same ID they are assigned in ViewPoint.

Using the Integration

To open OrthoCAD from a ViewPoint patient record, simply click the **Third Party Integration**  button in the ViewPoint toolbar and select **OrthoCAD**. OrthoCAD will start and automatically load the current patient.

With this integration, the 3rd Party **Update/New** button  in the patient folder has no function.

Contact

OrthoCAD

Cadent, Inc.
640 Gotham Parkway
Carlstadt, NJ 07072
www.orthocad.com
(800) 577-8767

ViewPoint

Ortho2
1107 Buckeye Avenue
Ames, IA 50010
www.ortho2.com
(800) 346-4504 or (515) 233-1026