

# OrthoMation

Integration Instructions for ViewPoint



The standard integration with GAC Technocenter's OrthoMation™ case presentation system allows you to start the OrthoMation software from a ViewPoint patient record and have the patient's findings transfer over. The OrthoMation slideshow integration allows you to trigger a specific slideshow from a ViewPoint patient record. You can choose to use either integration or both. These features require the ViewPoint Third Party Integration.

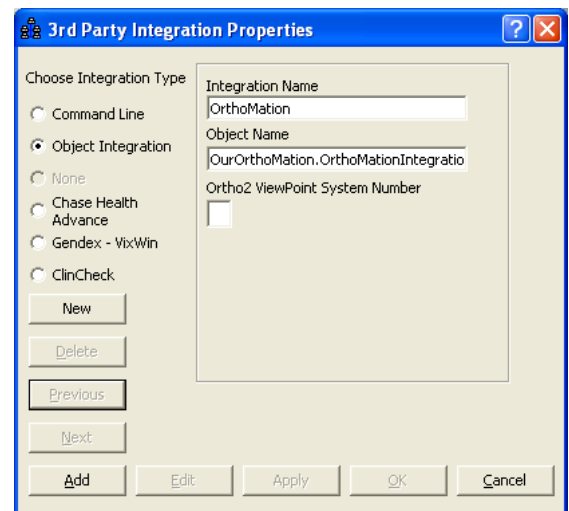
## Setup for the Standard Integration

Before you begin, be sure both ViewPoint and the OrthoMation software are installed properly.

### Third Party Integration

These steps must be followed on each station where you would like to use the integration.

- 1 From the ViewPoint Main Menu, click **[Tools & Utilities]** and then **[Third Party Integration]**.  
*Note: If you receive a CD-Key mismatch message, contact your Ortho2 Systems Consultant.*
- 2 Click **[New]**.
- 3 Select **Object Integration** for the integration type.
- 4 Enter "OrthoMation" for the **Integration Name**.
- 5 Enter "OurOrthoMation.OrthoMationIntegratio2" for the **Object Name**.
- 6 Click **[Add]** and **[OK]**.



## Treatment Findings

For the integration to function properly, the findings in ViewPoint need to be setup to match the choices available in OrthoMation. These steps need to be followed once.

- 1 From the Main Menu, click **[System Tables]** and then **[Treatment]**.
- 2 Select **Findings** and click **[OK]** (or double-click Findings).
- 3 Create a heading for the OrthoMation integration. The name does not matter, but is typically OrthoMation.

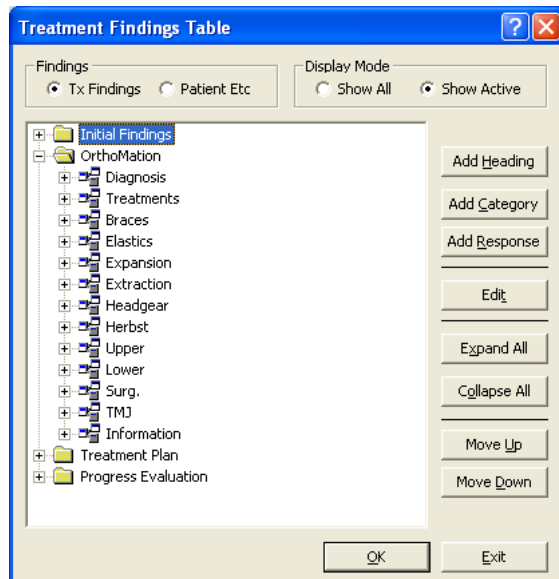
Alternately, the categories can be created under other headings.

For more information on editing the Findings table, refer to Chapter 6: System Tables in the *ViewPoint 7 Training & Users Guide*.

4 In this heading (or others), create the following thirteen categories:

- Diagnosis
- Treatment
- Braces
- Elastics
- Expansion
- Extraction
- Headgear
- Herbst
- Upper
- Lower
- Surg.
- TMJ
- Information

Spelling is critical, but the integration is not case sensitive.



5 Create the necessary responses in each category as shown below. Again, spelling is critical, but the integration is not case sensitive.

Diagnosis

- Class I
- Class II Div 1
- Class II Div 2
- Class III
- Crossbite
- Crowding
- Deep Bite
- Midline Discrepancy
- Discoloration
- Missing Teeth
- Anterior Open Bite
- Posterior Open Bite
- Spacing
- TMJ

Treatments

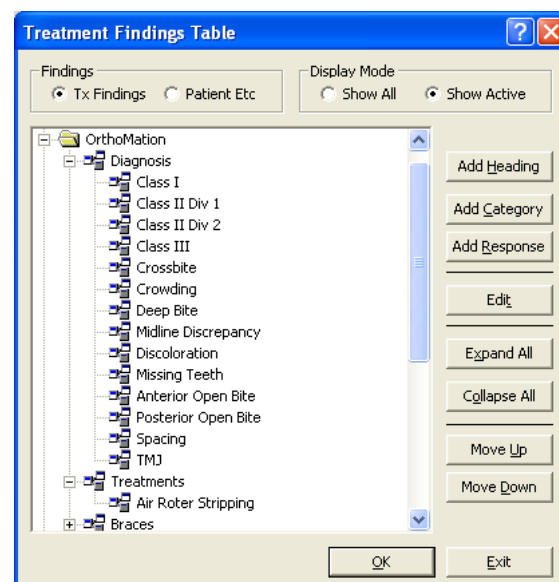
- Air Rotor Stripping

Braces

- Clear
- Gold
- Lingual
- Self-Ligating
- Stainless Steel
- Molar Bands
- Color Ligatures

Elastics

- Class I
- Class II
- Class III
- Crossbite
- Midline



Expansion

- Fixed/Banded
- Fixed/Bonded
- Sagittal
- Schwartz

Extraction

- 1st Bicuspid Upper & Lower
- 1st Bicuspid Upper
- 1st Bicuspid Lower
- 2nd Bicuspid Upper & Lower
- 2nd Bicuspid Upper
- 2nd Bicuspid Lower
- Lower Incisor

Headgear

- Cervical
- High-Pull
- Reverse

#### Herbst

- Banded/Cantilever
- Bonded/Acrylic

#### Upper

- Adv.
- Retr.
- Imp.
- Dwn.

#### Lower

- Adv.
- Retr.

#### Surg.

- Max. Red.
- Mand. Red.
- Mand. Adv.

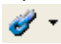
#### TMJ

- Anterior Slide
- Anterior Interference
- Anterior Open
- Lateral Slide
- Missing Tooth
- Normal
- Posterior Open

#### Information

- Hygiene
- Patient cooperation
- Records

## Using the Standard Integration

In the patient folder, select the appropriate responses on the Findings tab. Then, with the patient loaded, click the **Third Party Integration**  button in the ViewPoint toolbar and select **OrthoMation**. OrthoMation will start. The current patient will be loaded and the proper findings will be selected.

With this integration, the 3rd Party **Update/New** button  in the patient folder has no function.

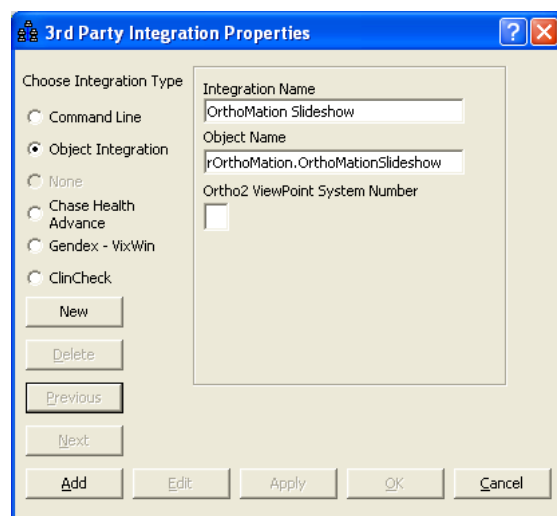
## Setup for the Slideshow Integration

Before you begin, be sure both ViewPoint and the OrthoMation software are installed properly.

### Third Party Integration

These steps must be followed on each station where you would like to use the integration.

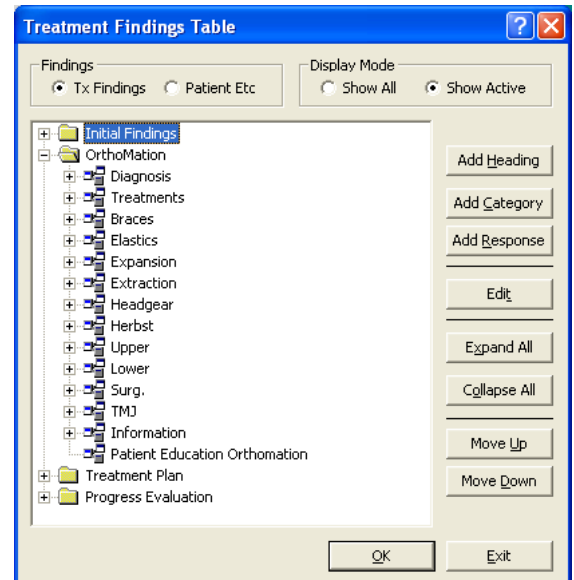
- 1 From the ViewPoint Main Menu, click **[Tools & Utilities]** and then **[Third Party Integration]**.  
*Note: If you receive a CD-Key mismatch message, contact your Ortho2 Systems Consultant.*
- 2 Click **[New]**.
- 3 Select **Object Integration** for the integration type.
- 4 Enter "OrthoMation Slideshow" for the **Integration Name**.
- 5 Enter "OurOrthoMation.OrthoMationSlideshow" for the **Object Name**.
- 6 Click **[Add]** and **[OK]**.



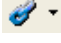
# Treatment Findings

For the integration to function properly, the findings in ViewPoint need to be setup to match the choices available in OrthoMation. These steps need to be followed once.

- 1 From the Main Menu, click **[System Tables]** and then **[Treatment]**.
- 2 Select **Findings** and click **[OK]** (or double-click Findings).
- 3 If you have not already, create a heading for the OrthoMation integration. The name does not matter, but is typically OrthoMation.  
  
For more information on editing the Findings table, refer to Chapter 6: System Tables in the *ViewPoint 7 Training & Users Guide*.
- 4 In this heading, create a category called "Patient Education Orthomotion". Be sure to match spelling and capitalization exactly.
- 5 In this category, create responses which exactly match the names of your slideshows in OrthoMation.



# Using the Slideshow Integration

In the patient folder, select the appropriate slideshow in the Patient Education OrthoMation category on the Findings tab. Then, with the patient loaded, click the **Third Party Integration**  button in the ViewPoint toolbar and select **OrthoMation Slideshow**. OrthoMation will start and play the selected slideshow.

With this integration, the 3rd Party **Update/New** button  in the patient folder has no function

# Contact

**OrthoMation**  
GAC TechnoCenter  
117 Gemini Circle, Suite 403  
Birmingham, AL 35209  
www.gactechnocenter.com  
(888) 422-2376

**ViewPoint**  
Ortho2  
1107 Buckeye Avenue  
Ames, IA 50010  
www.ortho2.com  
(800) 346-4504 or (515) 233-1026