

Orthobyte

Integration Instructions for ViewPoint



The ViewPoint integration with Orthobyte's 3-D Viewer software allows you to start the Orthobyte program from a ViewPoint patient record and view a selected 3-D model for the patient. These features require the ViewPoint Third Party Integration.

Setup

Before you begin, be sure both ViewPoint and the Orthobyte software are installed properly.

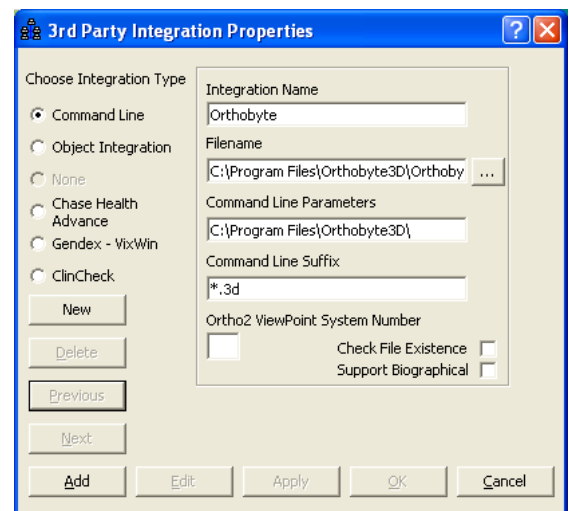
ViewPoint

These steps must be followed on each station where you would like to use the integration.

- 1 From the ViewPoint Main Menu, click **Tools & Utilities** and then **Third Party Integration**.

Note: If you receive a CD-Key mismatch message, contact your Ortho2 Regional Manager.

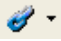
- 2 Click **New**.
- 3 Select **Command Line** for the integration type.
- 4 Enter "Orthobyte" as the Integration Name.
- 5 For the **Filename**, use ... to navigate to the **Orthobyte.exe** and select it.
- 6 In the **Command Line Parameters** field, enter the directory in which the images are stored.
- 7 Enter "*.3d" as the **Command Line Suffix**.
- 8 Select Check File Existence.
- 9 Click **Add** and **OK**.



Orthobyte

Patients will need to be entered in the Orthobyte database with the same ID they are assigned in ViewPoint. There is an ID field to fill out when the impressions are sent to Orthobyte.

Using the Integration

To open Orthobyte from a ViewPoint patient record, simply click the **Third Party Integration**  button in the ViewPoint toolbar and select **Orthobyte**. Orthobyte will start and automatically load the current patient.

With this integration, the 3rd Party **Update/New** button  in the patient folder has no function.

Contact

Orthobyte

Orthobyte Digital Technology, Inc
Unit 16, 2280 39th Ave. SW
Calgary, AB T2W 3K4
www.orthobyte.com
(800) 206-4452

ViewPoint

Ortho2
1107 Buckeye Avenue
Ames, IA 50010
www.ortho2.com
(800) 346-4504 or (515) 233-1026