

Planmeca Devices

Integration Instructions for ViewPoint



Several imaging devices from Planmeca, when set up correctly, will function the same as a scanner within VP Imaging. No additional hardware or software is needed.

Setup

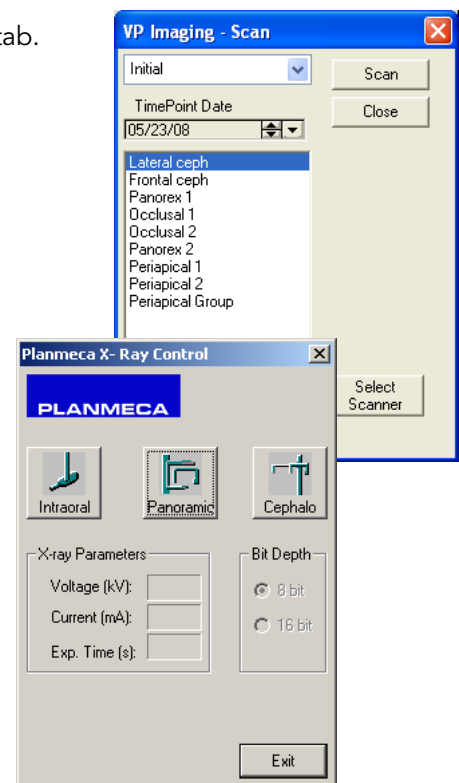
Install the Planmeca device, appropriate software, and corresponding TWAIN driver. This should be accomplished by someone from Planmeca.

For information on setting up VP Imaging, consult the VP Imaging documentation and contact Ortho2 Software Support with any questions.

Using the Integration

- 1 Open a patient record in ViewPoint and click the **VP Imaging** tab.
- 2 Select the appropriate layout.
- 3 Click **[Scan]** to open the *VP Imaging - Scan* window.
- 4 Select the appropriate timepoint.
- 5 Select the appropriate image type.
- 6 Click **[Select Scanner]** to open the *Select Scanner* window.
- 7 On the **Twain** tab, select the Planmeca device. Click **[OK]**.
- 8 Click **[Scan]** on the *VP Imaging - Scan* window. This will start your scanning software as shown at right. For more information on proceeding, refer to the Planmeca documentation.
- 9 A **Count=1** notation will appear beneath the **[Close]** button. Scan additional images or click **[Close]**.

Refer to the VP Imaging documentation for instructions on how to use the Image Editor.



Contact

Planmeca
Planmeca USA
100 N. Gary Avenue, Suite A
Roselle, IL 60172
www.planmecausa.com
(630) 529-2300

ViewPoint
Ortho2
1107 Buckeye Avenue
Ames, IA 50010
www.ortho2.com
(800) 346-4504 or (515) 233-1026