

# Sirona Sidexis

Integration Instructions for ViewPoint



*Sidexis software is used to capture panoramic images from the Sirona Scanner. When set up correctly, the Sirona Scanner will function the same as a regular scanner within VP Imaging. No additional hardware or software is needed.*

## Setup

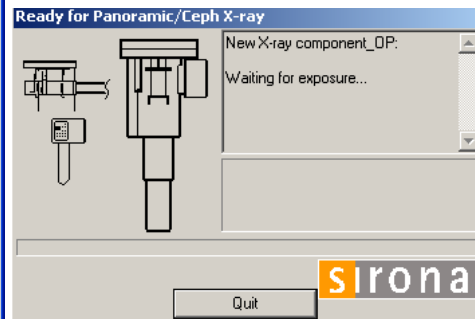
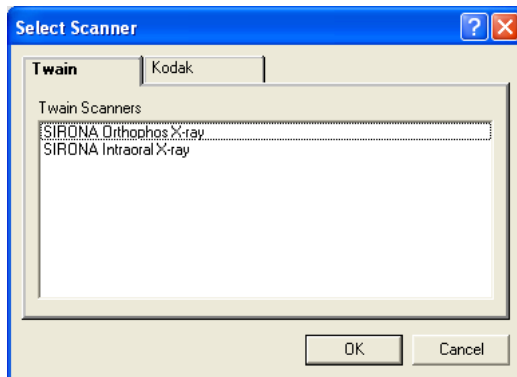
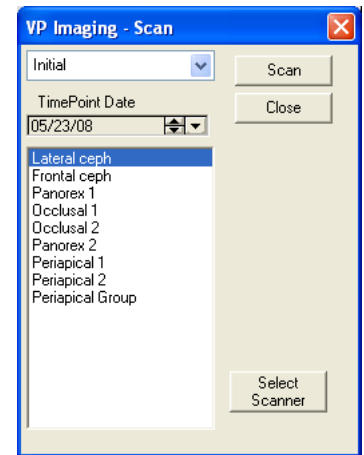
Install Sidexis software version 2.3 and the corresponding TWAIN driver. This should be accomplished by someone from Sirona.

Note: This integration will not function with the Access version of Sidexis.

For information on setting up VP Imaging, consult the VP Imaging documentation and contact Ortho2 Software Support with any questions.

## Using the Integration

- 1 Open a patient record in ViewPoint and click the **VP Imaging** tab.
- 2 Select the appropriate layout.
- 3 Click **Scan** to open the *VP Imaging - Scan* window.
- 4 Select the appropriate timepoint.
- 5 Select the appropriate image type.
- 6 Click **Select Scanner** to open the *Select Scanner* window.
- 7 On the **Twain** tab, select **SIRONA Orthophos X-ray**. Click **OK**.



- 8 Click **Scan** on the *VP Imaging - Scan* window. This will start your scanning software. For more information on proceeding, refer to the Gendex documentation.
- 9 A **Count=1** notation will appear beneath the **Close** button. Scan additional images or click **Close**.

Refer to the VP Imaging documentation for instructions on how to use the Image Editor.

# Contact

## **Sidexis**

Sirona Dental Systems LLC  
4835 Sirona Drive  
Charlotte, NC 28273  
[www.sirona.com](http://www.sirona.com)  
(800) 659-5977

## **ViewPoint**

Ortho2  
1107 Buckeye Avenue  
Ames, IA 50010  
[www.ortho2.com](http://www.ortho2.com)  
(800) 346-4504 or (515) 233-1026