

# Soredex Digora

Integration Instructions for ViewPoint

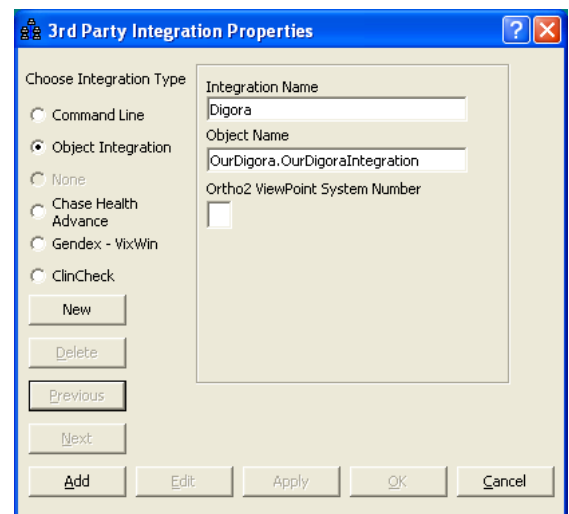


*Digora® software is used with a variety of Soredex radiography machines. This integration allows you to start the Digora software from a ViewPoint patient record. You can also update and add new patients to Digora from ViewPoint. These features require the ViewPoint Third Party Integration.*

## Setup


Before you begin, be sure both ViewPoint and the Digora software are installed properly.

- 1 From the ViewPoint Main Menu, click **Tools & Utilities** and then **Third Party Integration**.  
*Note: If you receive a CD-Key mismatch message, contact your Ortho2 Regional Manager.*
- 2 Click **New**.
- 3 Select **Object Integration** for the integration type.
- 4 Enter "Digora" for the **Integration Name**.
- 5 Enter "OurDigora.OurDigoraIntegration" for the **Object Name**.
- 6 Click **Add** and **OK**.



## Using the Integration

With a patient loaded, click the **Third Party Integration**  button in the ViewPoint toolbar and select **Digora** to open Digora to the patient. If the patient does not exist in Digora, it will open to a blank record.

Whenever you update a patient's first name, middle initial, last name, or patient ID in ViewPoint or add a new patient to ViewPoint, it is easy to update Digora with this information. Simply click the 3rd Party **Update/New** button  in the upper right hand corner of the patient folder. This button will also open Digora to the patient.

## Contact

**Digora**  
Soredex  
300 West Edgerton Avenue  
Milwaukee, WI 53207  
www.soredexusa.com  
(800) 235-8854

**ViewPoint**  
Ortho2  
1107 Buckeye Avenue  
Ames, IA 50010  
www.ortho2.com  
(800) 346-4504 or (515) 233-1026