

SureSmile

Integration Instructions for ViewPoint



The ViewPoint integration with SureSmile Treatment Planning Software transfers a patient's images and biographical information from ViewPoint to SureSmile. These features require the ViewPoint Third Party Integration.

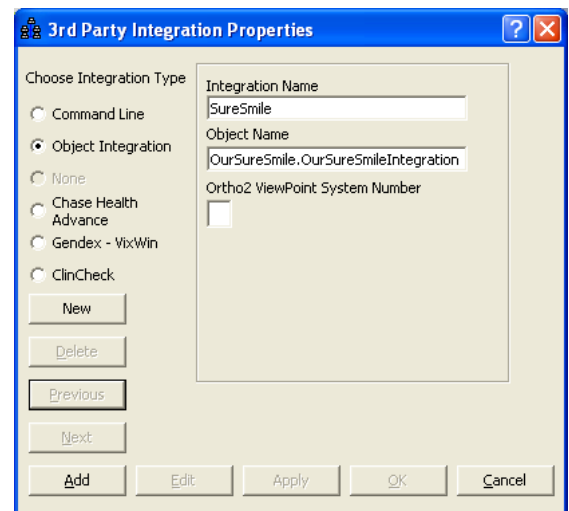
Setup

Before you begin, be sure both ViewPoint and the SureSmile software are installed. ViewPoint needs to be version 6.0 or higher.

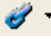
The patient's images must be stored in VP Imaging, VistaDent, or Dolphin Imaging and be accessible from the computer using the SureSmile integration. The **Path to Images** in the *Imaging Package Properties* must be set correctly. If you are unable to view patients' images on the Patient tab at this computer, refer to the VP Imaging or imaging integration documentation or call Ortho2 Software Support.

These steps must be followed on each station where you would like to use the integration.

- 1 From the ViewPoint Main Menu, click **Tools & Utilities** and then **Third Party Integration**.
Note: If you receive a CD-Key mismatch message, contact your Ortho2 Regional Manager.
- 2 Click **New**.
- 3 Select **Object Integration** for the integration type.
- 4 Enter "SureSmile" for the **Integration Name**.
- 5 Enter "OurSureSmile.OurSureSmileIntegration" for the **Object Name**.
- 6 Click **Add** and **OK**.



Using the Integration

Click the **Third Party Integration**  button in the ViewPoint toolbar and select **SureSmile**. A SureSmile "bridge" application will open and allow you to review the patient's images and data before launching SureSmile.

With this integration, the 3rd Party **Update/New** button  has no function.

Contact

SureSmile
OraMetrix, Inc.
2350 Campbell Creek Blvd., Suite 400
Richardson, TX 75082
www.suresmile.com
(888) 672-6387

ViewPoint
Ortho2
1107 Buckeye Avenue
Ames, IA 50010
www.ortho2.com
(800) 346-4504 or (515) 233-1026

May 2, 2018